

# NETINIUM<sup>®</sup>

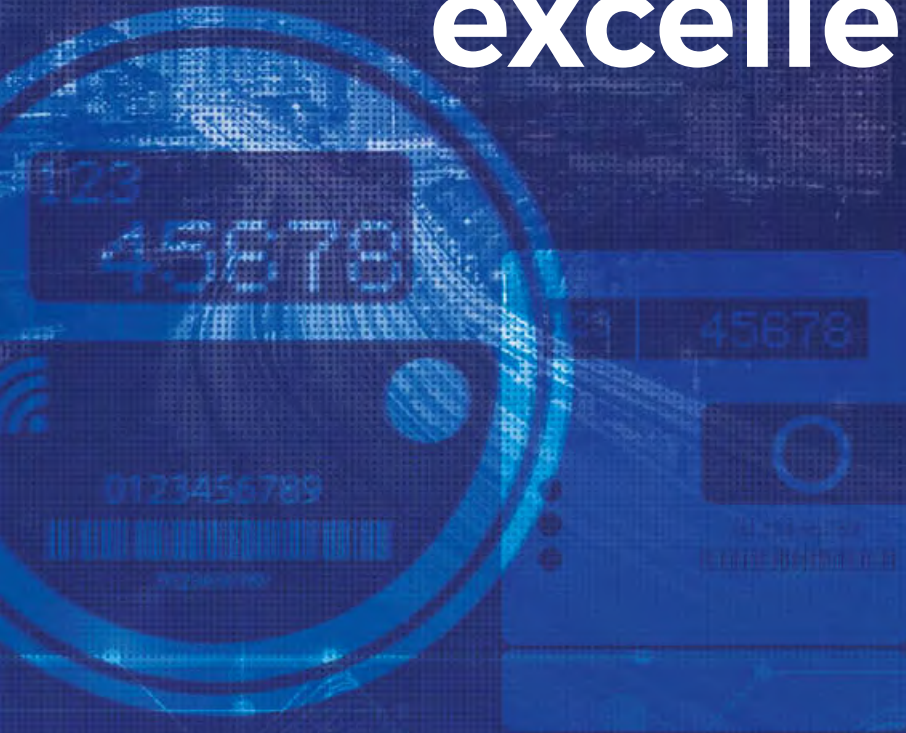
The smart energy platform




Create space for

> **Innovation**

Remain **operational  
excellent**



INNOVATION



## A scalable platform empowering you to take control of your OPEX and ROI side by side, in a secure way

The unstoppable evolution from smart metering towards a digitised grid asks for a scalable and cost-efficient IT platform. A reliable platform that allows you to fully leverage the potential of all your digital assets.

At Netinium®, we strongly believe the key to your success is a scalable platform empowering you to take control of your OPEX and ROI side by side, in a secure way.

The Netinium AMM+ platform enables you to take control of your smart grid management via highly automated and uniform management processes. Leading the way for you to take control of the ongoing energy evolution by creating space for innovation to happen.

After more than 25 years of research, development and operational management of millions of smart devices, we have removed all barriers of a smart grid software infrastructure for your (future) business model.

Empowering you to take control of meeting ever-changing demands of the smart grid evolution, without losing track of your operational excellence.

Evolutionary demands, technical quality and smart business models should make the difference when acquiring and integrating new smart devices. In reality, future hardware decisions are most influenced by complex software heritage, in order to avoid the operational challenges of vertically integrating new head end or API software.

**With Netinium AMM+, you can always add multiple devices from any brand to your existing infrastructure.**

Always choose cutting edge hardware technology to meet the ever-changing demands of the energy evolution. Slash the recurring, hidden costs of painful integration activities and change management.

Together, we create a seamless, scalable and inter-operable network infrastructure, enabling uniform and automated processes to manage your entire smart grid.

**Netinium is currently...**

- › managing over 2.000.000 smart meter devices in 7 different geographical areas
- › providing 50 different meter adapters
- › covering 300 firmware versions of more than 10 different brands
- › adding over 3K devices each and every day
- › enabling pre-paid energy with real-time mobile top-ups





Endless

> **Device**   
**flexibility**

# EFFICIENCY



Excellence in

› **System**   
**efficiency**

# Proper, ongoing device management guarantees a constant flow of high quality data

Despite the many promises about the possibilities of big data, good analysis requires high quality data input: the garbage-in-garbage-out-principle. Proper, ongoing device management guarantees a constant flow of high quality data.

That is why Netinium AMM+ goes beyond leveraging incremental, real-time trustworthy data. It comes with an all-inclusive, wide range of additional smart operational management features. Features that made it possible for our customers to integrate almost all of their asset- and operational management layers and activities into the Netinium platform.

## **Features fully designed to further enhance your operational excellence**

Decrease the number of people needed in your control room and lower OPEX by presetting automated, simplified and uniform AMI processes. All you need to do, is manage occasional exceptions. Leaving you with plenty of opportunities to unlock the potential of your smart grid.

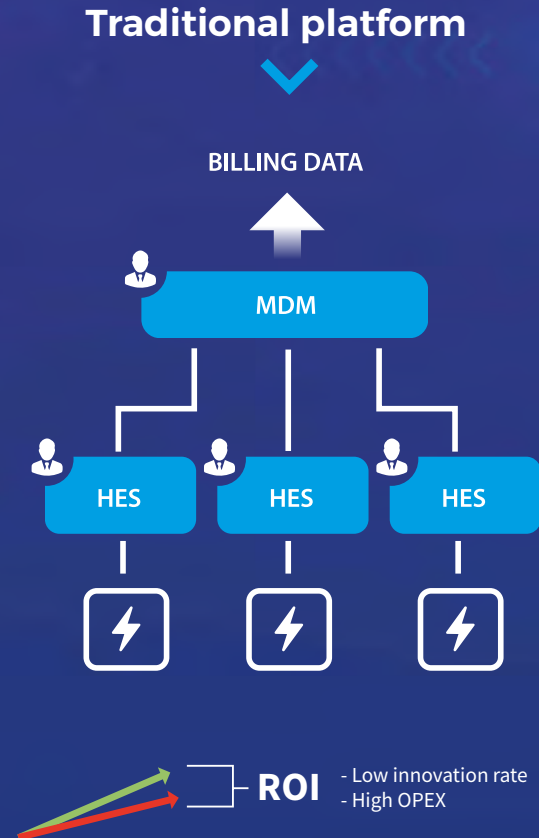
### **Netinium delivers**

- › Operational savings of over € 40.000.000 by reducing the industry average installation failure rate of 8% down to 1,5%
- › Meter integration & performance testing within 1 month
- › Benchmarked within-the-hour reads of 30.000.000 meters

# > Netinium versus €

proprietary head ends

No proprietary platform matches Netinium when it comes to reducing costs



## > Multi-application

Combine smart metering with e.g. PV and EV monitoring, heat pumps, smart in-home devices and energy storage solutions.

## > Multi-utility and device hierarchy

Netinium fits your entire network and manages any (combination of) device hierarchy.

## > Multi-communication technology

Netinium is compatible with all globally common communication standards, both stand alone as in combination. We have benchmarked within-the-hour reads of 30.000.000 smart meters.

GPRS - CDMA - BPL - PLC -  
RF / Mesh Radio - LTE/4G - NB-IoT



# Netinium smart energy platform



## > Multi-system interface and multi-tenancy

Utilizing industry standard interface based in IEC61968 CIM model, Netinium facilitates easy integration with MDM's and other applications such as OMS and GIS. Improve data quality, simplify and speed up change management.

## > Multi-area

Combine multiple network areas into one network infrastructure. Allow only particular people to execute particular actions or control specific areas.

## > Multi-secure

Role-based access and full audit trails combatting international unauthorized actions while data management complies with the toughest privacy rules.

S

W

R

D

A

T

A

T

DATA

Value



IoT

Analysis

110101 001001 001010

> Meter   
management  
at a glance

This list is just a glance of all features within Netinium. Gain more insights about our management highlights that increase the ROI of your smart investments. Read all about it at [netinium.com](http://netinium.com) or contact us directly to request your personalized live demo.

#### > **Installation management**

- > One single operations environment across all communication networks
- > Fully automated installation, configuration, validation and notification of both new and replaced devices, incl. data concentrators, (sub) meters and IHD for plug-n-play maintenance

#### > **Data collection**

- > Fully automated, flexible and autonomous data collection for specific devices, device groups or mass data collection.
- > No need for MDM to provide scheduling
- > Robust scheduling and benchmarked within-the-hour read of 30M meters
- > Data pull, push or combinations

#### > **Security & privacy**

- > Secure shipment file incl. security key management during installation process
- > Role-based access and full audit trails combatting internal unauthorised actions ensuring data management complies with the toughest privacy rules
- > Secure, system-wide root of trust, scalable to support current and future encryption requirements
- > Supports request driven data collection and anonymised data fields for privacy requirements compliance

#### > **Device (hierarchy) management**

- > Remotely fix misconfigured devices
- > Find devices based on any combination of 100+ attribute types

#### > **Firmware updates**

- > Fully automated rule-based firmware update process for individual devices, groups and batch updates
- > Update device firmware based on specific device parameters

### **Operational analytics**

Drilldown from dashboard to individual devices. Integrate the Netinium AMM+ platform with our operational analytics add-on OPALL+, and open up even more business opportunities while tapping into the incremental amount of high quality data. With the statistics and analytics capabilities of OPALL+, you can take into account a variety of aspects to further automate decision making, improve business models and business operations, and respond in real-time.



> **Innovative**   
R&D **solutions**

**EVOLUTION**

With a track record of over 20 years of shared roadmap experience with our partner Alliander, Netinium is your partner to move forward within the energy evolution

Moreover, we bring our innovative R&D solutions to the next level each and every day. Real life testing and demonstration is a must to move sustainable technologies from concept to practical application. Therefore, Netinium partners not only with innovation driven DSO's and SI's, but also with internationally renowned research and test partners.

For example, we are to become the ICT infrastructure partner for Dutch academic research institute TNO within the Smart Community Aruba project. This partnership includes the set-up and integral management of a centralised uniform smart energy data platform by Netinium, enabling and monitoring data collection & data routing of all data measured by smart meters and other smart instruments within the Smart Community Aruba.



Compliant to all major open industry standards, such as DLMS/COSEM, LLS/HLS, FIPS 140-2, OMS, CIM / IEC61968 and many more.

# Gain all smart insights, request your live demo and free trial today

We are confident enough to state that we have taken away all possible barriers of smart grid software infrastructures. But whatever promise we make, the best way to show you what our platform is capable of is by offering you a free trial.

Our dedicated team is looking forward to meeting you and share their in-depth insights during a live demonstration in person.

Subsequently, a free 30-day trial can be activated upon request. Find out for yourself, and connect your meters to our platform using our hosted test version.

**Contact your Netinium account manager today,  
or get in touch via [netinium.com](http://netinium.com)**





678

56789

2789



> **Explore**  
all possibilities

ACTIVATION

# NETINIUM®

**The smart energy platform**

## **Netinium Europe Headquarters and R&D**

Bruynvisweg 4, 1531 AZ Wormer, The Netherlands

☎ +31 (0)75-6400333 ✉ [info@netinium.com](mailto:info@netinium.com)

© 2017 Netinium B.V. Netinium and the Netinium® logo are registered trademarks of MicroTask B.V. registered in the Netherlands and other countries. 'The smart energy platform' and 'OPALL' are trademarks of Netinium B.V. All other trademarks belong to their respective owners. This data sheet may contain advanced information. Specifications are subject to change.

**[www.netinium.com](http://www.netinium.com)**